

Video Operator: ZetaUser

Operator (Report): ZetaUser

## Sample Parameters

Sample Name: D-AbsAltF3dlE4  
Sample Info 1:  
Sample Info 2:  
Sample Info 3:  
Electrolyte: PBS  
Temperature: 25.10 °C sensed  
pH 7.4 entered  
Conductivity: 15000.00 µS/cm sensed

## Instrument Parameters

Laser Wavelength: 488 nm  
Filter Wavelength: Scatter  
Sensitivity: 80  
Shutter: 100

## SOP: EV\_488\_scatter

Size Distribution 1 Cycle 11 Positions  
Description: EV/ 488nm laser

## Result (sizes in nm)

|              | Number | Concentration | Volume |
|--------------|--------|---------------|--------|
| Median (X50) | 143.1  | 143.1         | 228.7  |
| StdDev       | 65.3   | 65.3          | 78.9   |

Concentration: 6.3E+7 Particles / mL  
Dilution Factor: 100000  
Original Concentration: 6.3E+12 Particles / mL

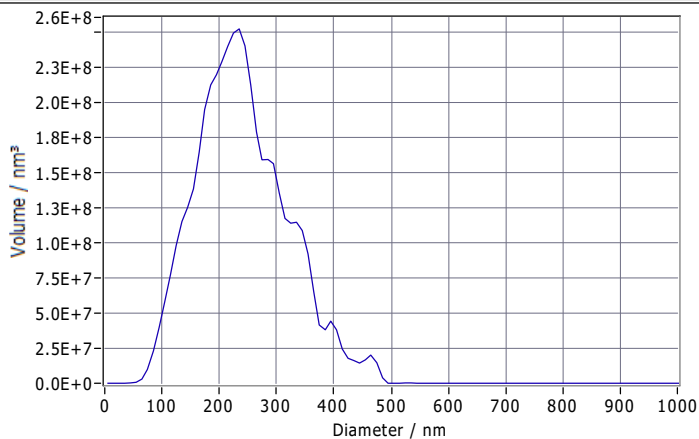
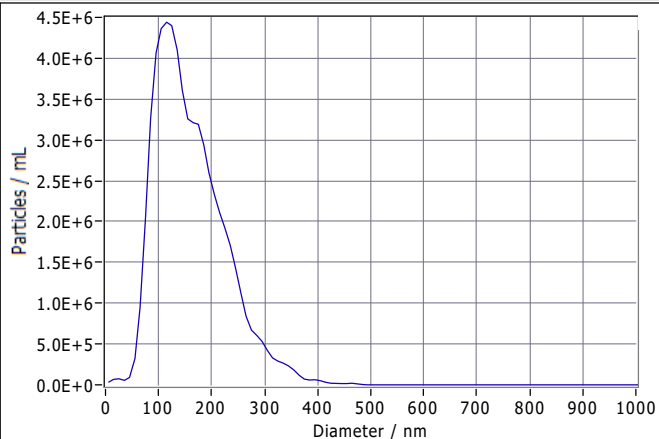
10000  
6.3E11

## Quality

Average Counted Particles per Frame: 148  
Number of Traced Particles: 1360

## Analysis Parameters

Max Area 1000, Min Area 10, Min Brightness 30, nm/Class: 10



## Peak Analysis (Concentration)

| Diameter / nm | Particles/mL | FWHM / nm | Percentage |
|---------------|--------------|-----------|------------|
| 115.4         | 4.4E+6       | 133.7     | 100.0      |

## X Values (all sizes are given in nm)

|        | Number | Concentration | Volume |
|--------|--------|---------------|--------|
| X10    | 82.9   | 82.9          | 137.3  |
| X50    | 143.1  | 143.1         | 228.7  |
| X90    | 243.3  | 243.3         | 343.0  |
| Span   | 1.1    | 1.1           | 0.9    |
| Mean   | 160.5  | 160.5         | 241.4  |
| StdDev | 65.3   | 65.3          | 78.9   |



Comment

(Signature)

Analyzed Video: Y:\Maikel\250328\20250328\_0014\_D-AbsAltF3dlE4\_size\_488.avi

Experiment: 2025-03-28 12:49 ZetaView S/N 21-713, Software ZetaView (version 8.05.16 SP3)

Report: 2025-03-28 12:50 Software ZetaView (version 8.05.16 SP3)